

**MULTIVAL**



Multiwal Haro folding partitions

*The flexible arrangement of your space*



**GHV**

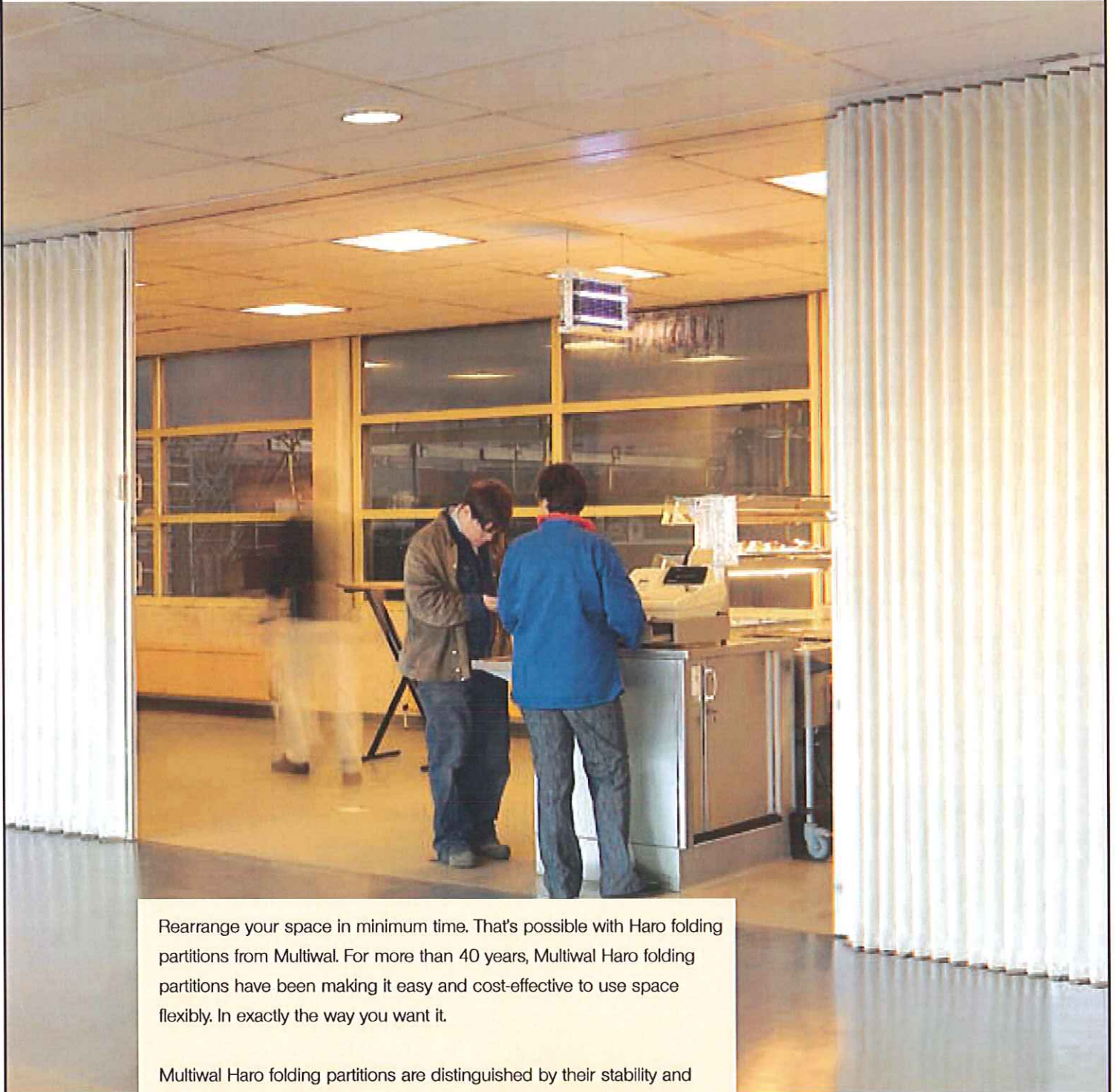
**MONTASJE** AS

[www.ghv.no](http://www.ghv.no)

Systemgulv.no  
Systemhimling.no  
Systemvegg.no  
Foldevegg.no  
Glasstak.no

Kjerrheia 45, N-4621 KRISTIANSAND, Tlf. +47 38 01 55 90

## A new layout in less than no time

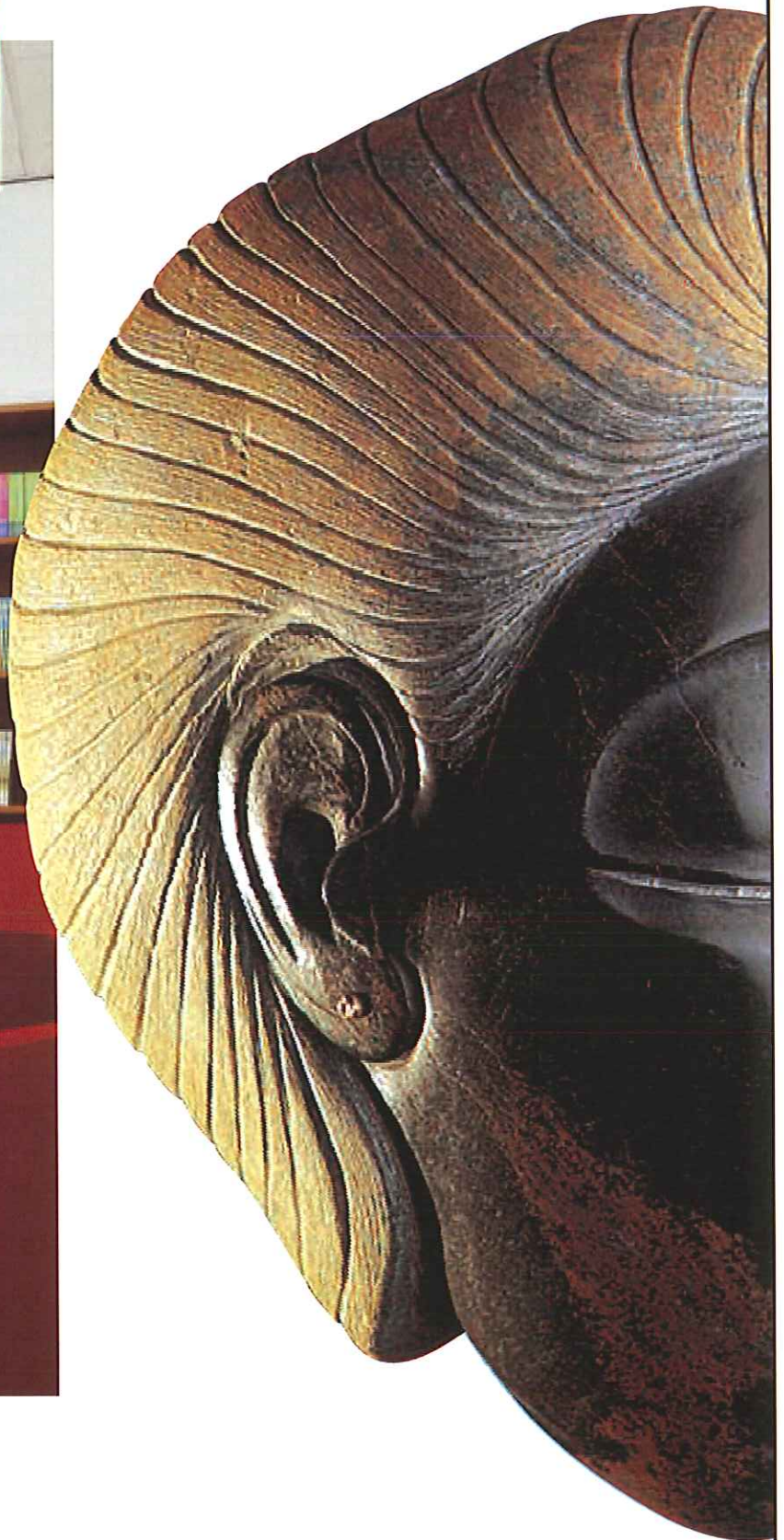


Rearrange your space in minimum time. That's possible with Haro folding partitions from Multiwal. For more than 40 years, Multiwal Haro folding partitions have been making it easy and cost-effective to use space flexibly. In exactly the way you want it.

Multiwal Haro folding partitions are distinguished by their stability and ease of use. And they can provide not only the perfect visual division but also excellent soundproofing. That means that Haro folding partitions from Multiwal can be used practically anywhere – in both commercial and residential buildings. Multiwal is Europe's largest producer of Haro folding partitions, with satisfied customers all over the world.



Multiwal Haro folding partitions also make it possible to make optimal use of small spaces.



**GHV**

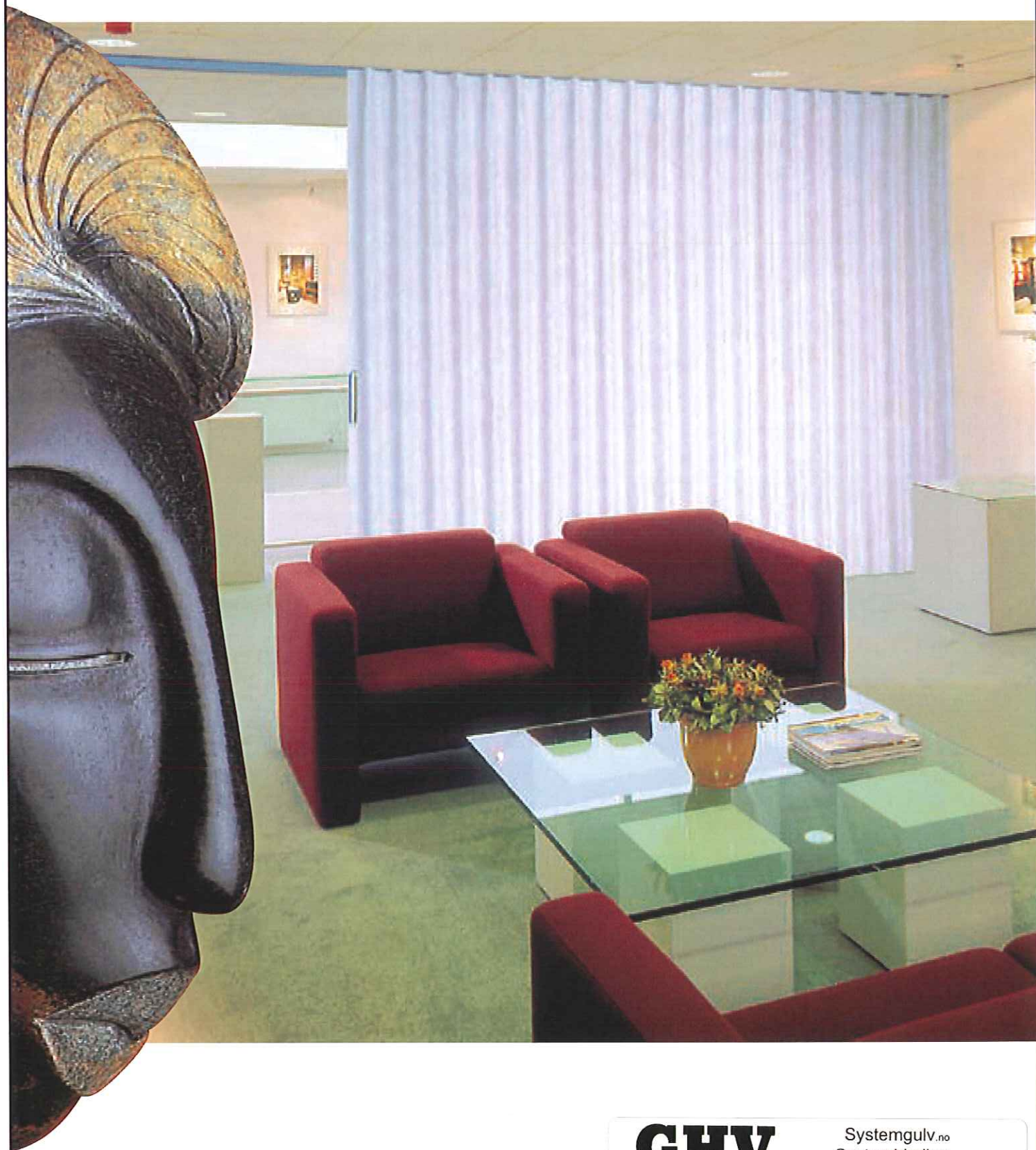
**MONTASJE**

[www.ghv.no](http://www.ghv.no)

Systemgulv.no  
Systemhimling.no  
Systemvegg.no  
Foldevegg.no  
Glasstak.no

Kjerrheia 45, N-4621 KRISTIANSAND, Tlf. +47 38 01 55 90

**Exclusive and still private**



**GHV**

**MONTASJE** SOFA

[www.ghv.no](http://www.ghv.no)

Systemgulv.no

Systemhimling.no

Systemvegg.no

Foldevegg.no

Glasstak.no

Kjerrheia 45, N-4621 KRISTIANSAND, Tlf. +47 38 01 55 90



#### **Haro 24: the most frequently sold wall**

Conference hall or meeting room, theatre or sports centre: Multiwall Haro folding partitions are everywhere. And with good reason. Just look at their main features:

- The 'double harpoon latch' is fitted as standard and connects the joints seamlessly.
- You can lock the wall in the closed as well as the open position.
- The restraint for fixing the wall is automatically in the open position.
- All visible metal parts are made of plain anodised aluminium.
- The inner frame is hot-dip galvanised and consists of scissored elements linked to each other by rods, creating an extremely solid construction.
- The heavy-duty leatherette cladding is dirt-repellent, washable and self-extinguishing. The fabric does not shrink or stretch, so that the pleats remain straight and smooth.
- Floor rails are not necessary, which means that the floor covering can be laid without interruption.

#### **And these extras complete the picture:**

- You save extra space with an end section at right angles to the main track. The open folded partition can then be stowed parallel to the wall.
- When fitted with rotating hinges, the folding partition wall can be led through any bend with a radius of more than 70 cm.
- The fixed wall attachment can be replaced by an extra front upright with a lock
- The Harostop restraint enables you to secure the front upright in any position, even in the parked position.
- Felt draught strips fitted to the top and bottom of the partition optimise the seal.

# **GHV**

**MONTASJE AS**

[www.ghv.no](http://www.ghv.no)

Systemgulv.no  
 Systemhimling.no  
 Systemvegg.no  
 Foldevegg.no  
 Glasstak.no

Kjerrheia 45, N-4621 KRISTIANSAND, Tlf. +47 38 01 55 90

## Multiwal Haro folding partitions type Haro 24: unlimited options for use

Multiwal Haro folding partitions have been specially developed for the most diverse applications. Whether in hotels, retirement homes, apartments or utility buildings, Multiwal Haro folding partitions can be found everywhere. Besides the excellent features of the Haro 24, Multiwal Haro folding partitions also offer many extras, such as Harocoustic soundproofing.



**GHV**

**MONTASJE**

[www.ghv.no](http://www.ghv.no)

[Systemgulv.no](http://Systemgulv.no)  
[Systemhimling.no](http://Systemhimling.no)  
[Systemvegg.no](http://Systemvegg.no)  
[Foldevegg.no](http://Foldevegg.no)  
[Glasstak.no](http://Glasstak.no)

# Harocoustic: when you need peace and quiet

Nowadays, with silence becoming an increasingly rare commodity, the carefully tested features of Harocoustic folding partitions are being appreciated more and more. For good acoustic insulation, special attention is paid to the way the panels are attached to walls, ceilings and floors. In addition, Harocoustic has special sealing profiles, and the insides of the panels are covered with acoustic materials.

Harocoustic folding partitions are available in four designs, each with their own specific features.

- Type A 21 dB
- Type A1 29 dB
- Type B 37 dB
- Type D 43 dB

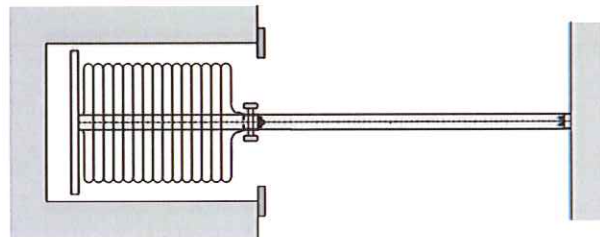
Average soundproofing between 100 and 3200 Hertz (Rw)

## Harostop

Harocoustic folding partitions have a double harpoon latch, called Harostop. The walls can be attached with the Harostop at the location of your choice – also, therefore, in the restrained position. The front upright has this lock built in as standard, supplied with rubber caps.

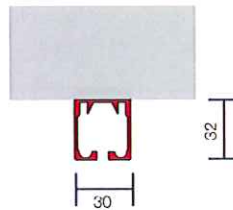


## Recess sizes available on request

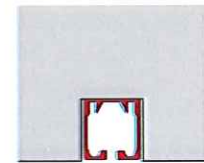


## Rail constructions

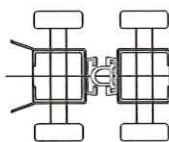
### Surface mounted



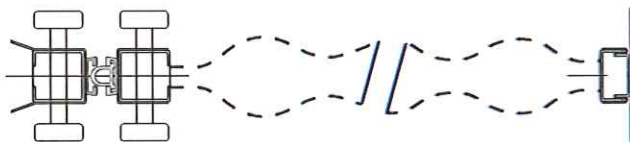
### Recessed



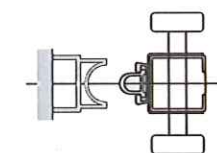
### Double-winged Haro 24



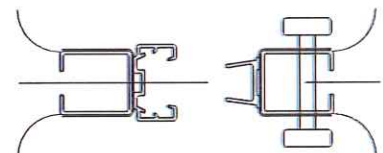
### Wall jamb back upright



### Wall jamb and upright (single-winged)



### Double-winged Haro 36\*



Track type 36: H 43 x B 38 mm

**GHV**  
**MONTASJE** AS

www.ghv.no

Systemgulv.no  
Systemhimling.no  
Systemvegg.no  
Foldevegg.no  
Glasstak.no

Kjerrheia 45, N-4621 KRISTIANSAND, Tlf. +47 38 01 55 90

# MULTIWAL



## Multiwal B.V.

Kleine Beer 20  
PO Box 272  
2950 AG Alblasterdam  
The Netherlands  
Tel: 0031-78-6922122  
Fax: 0031-78-6934228  
E-mail: info@multiwal.nl

[www.multiwal.com](http://www.multiwal.com)



## Intelligent solutions for a flexible space

For more than 40 years, Multiwal has been manufacturing and installing a wide range of panel walls, folding partitions, glass partitions and WC, shower and changing cubicles. Our customers mainly consist of government bodies, architects, project developers, housing cooperatives and building contractors. We have built up a close relationship with these customers over the years.

Because Multiwal provides customised solutions, it is always better if our advisers become involved in your project as early as possible in the planning phase. In that way, we can jointly arrive at intelligent solutions for the most flexible arrangement of your space.

Multiwal will design and manufacture your solution in-house. Needless to say, the process involves continuous quality control and the use of our advanced production techniques. And Multiwal will remain committed to your project, even after we have expertly installed the walls and conducted our final inspection. Periodical inspections by our team of specialists will ensure that your dividing walls remain in perfect condition.

Please feel free to contact us for detailed information about:

- Multiwal folding partitions
- Multiwal panel walls
- Multiwal glass panel walls
- Multiwal sanitary partitions



*Technical data sheets and drawings available on request*

Dealer address:

**GHV**  
**MONTASJE** AS  
[www.ghv.no](http://www.ghv.no)

Systemgulv.no  
Systemhimling.no  
Systemvegg.no  
Foldevegg.no  
Glasstak.no

Kjerrheia 45, N-4621 KRISTIANSAND, Tlf. +47 38 01 55 90



All our products are ISO certified.

**Our quality is your security.**